



Key Connection

Center Distance $a_o = 100 \text{ mm}$

5 Mounting Surfaces

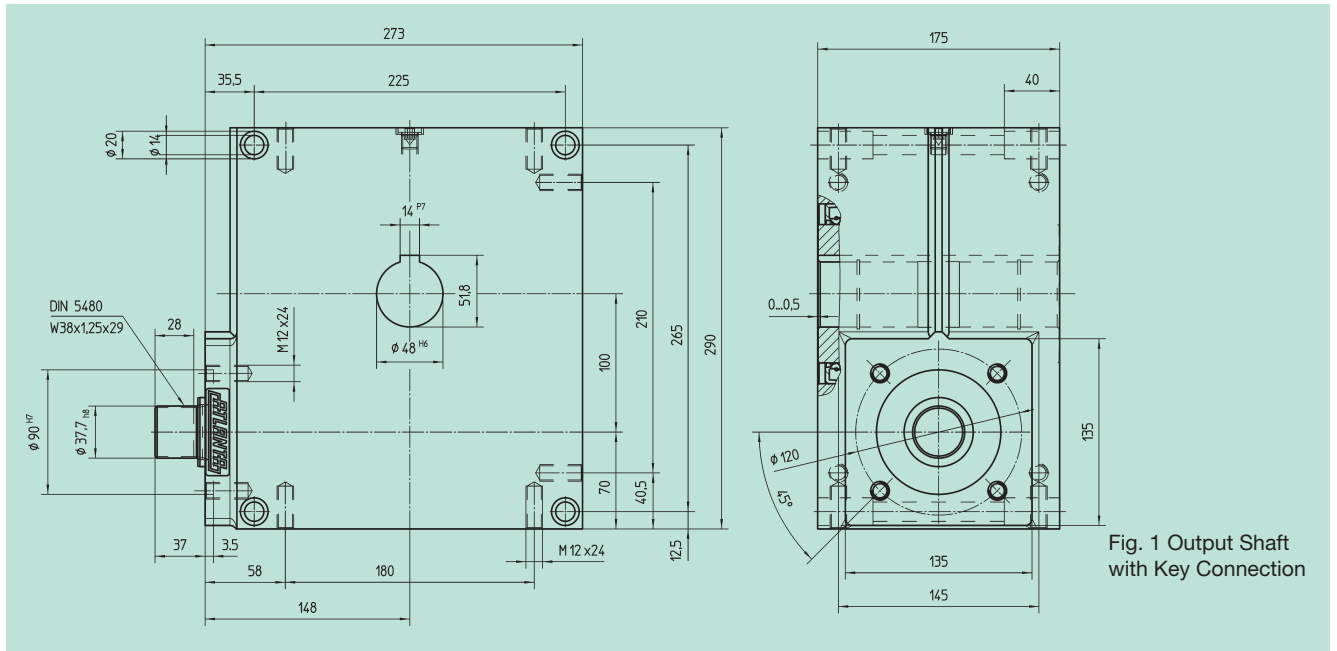


Fig. 1 Output Shaft with Key Connection

Shrink-Disk Connection

Center Distance $a_o = 100 \text{ mm}$

5 Mounting Surfaces

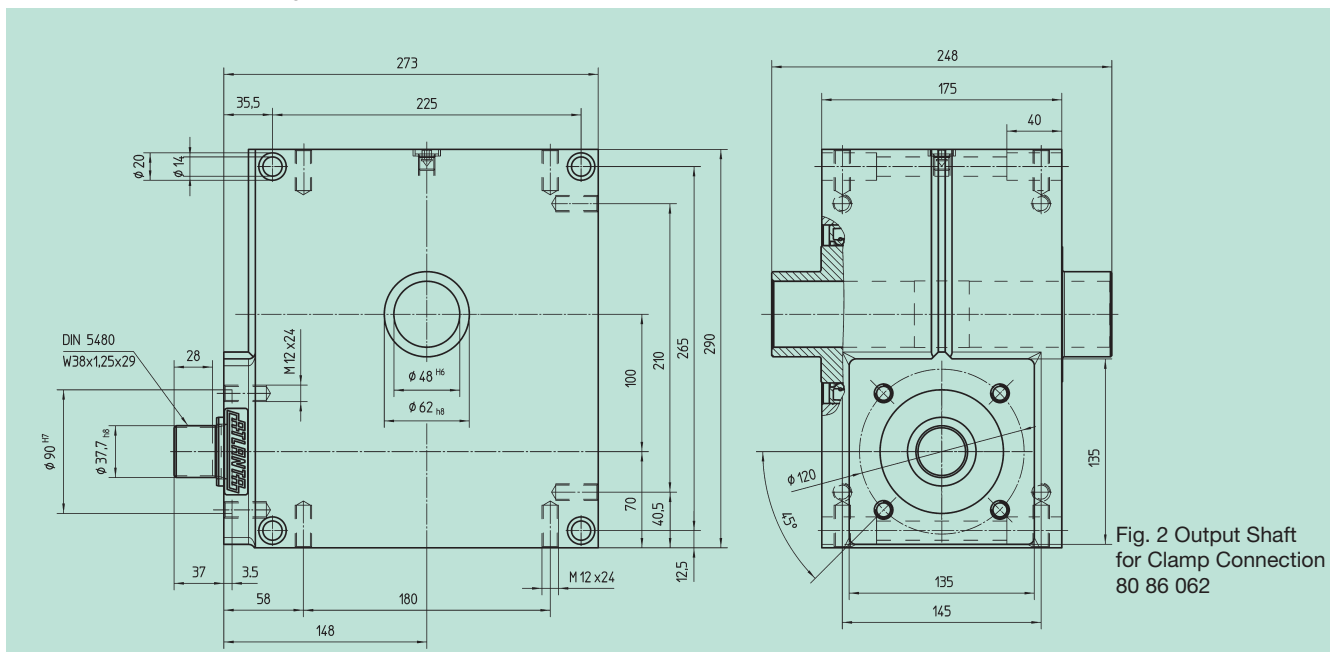


Fig. 2 Output Shaft for Clamp Connection 80 86 062

Order Code

5 Mounting Surfaces

Key Connection

Shrink-Disk Connection

Ratio i

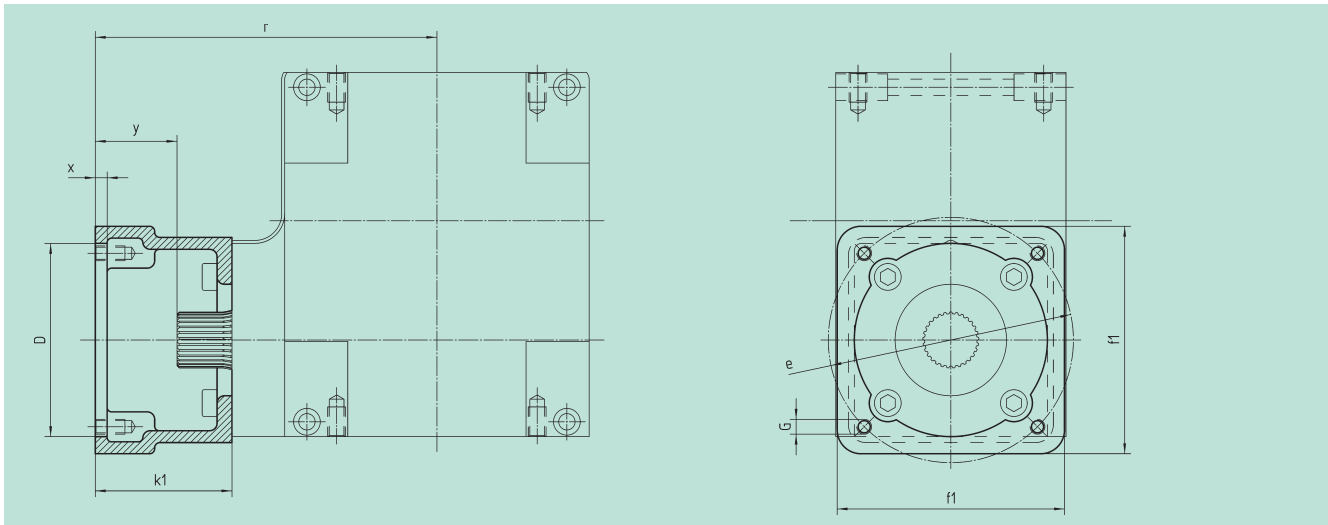


J_{red}
 10^{-4} kg m^2

57 06 007	57 16 007	6.75	28	12.8835
57 06 009	57 16 009	9.25	28	8.0975
57 06 015	57 16 015	14.50	28	7.2190
57 06 020	57 16 020	19.50	28	5.4030
57 06 029	57 16 029	29.00	28	4.7207
57 06 039	57 16 039	39.00	28	8.4300
57 06 052	57 16 052	52.00	28	9.7400



Motor Flange



< 12 arcmin

Center Distance $a_o = 100 \text{ mm}$

Order Code	D ^{G7}	k ₁	r	x	y	f ₁	e	G	kg
65 59 501	110.0	92.0	240.0	7	55.0	153	165	M10	2.0
65 59 502	130.0	92.0	240.0	7	55.0	153	165	M10	3.5
65 59 503	180.0	122.0	270.0	7	85.0	192	215	M12	3.5
65 59 504	180.0	127.0	275.0	7	90.0	192	215	M12	3.5
65 59 505	180.0	112.0	260.0	7	75.0	192	215	M12	3.0
65 59 506	130.0	112.0	260.0	7	75.0	192	215	M12	3.0
65 59 507	130.0	112.0	260.0	7	75.0	155	165	M10	4.5
65 59 508	110.0	90.0	238.0	7	53.0	130	145	M8	2.0
65 59 509	110.0	108.5	256.5	7	71.5	130	145	M8	2.5
65 59 510	114.3	129.5	277.5	7	92.5	180	200	M12	5.5
65 59 511	114.3	163.5	311.5	7	126.5	180	200	M12	8.0
65 59 512	114.3	105.5	253.5	7	68.5	180	200	M12	4.0
65 59 513	110.0	113.5	261.5	7	76.5	130	145	M8	2.5

The order should contain gear box 57 06 0xx / 57 16 0xx and flange 65 59 5xx.