



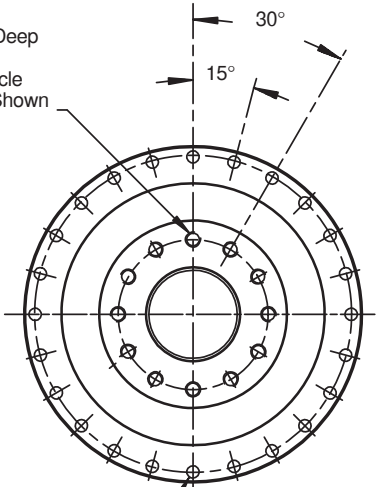
"PHQ" Series ServoFit® Precision Planetary Gearhead Dimensional Data



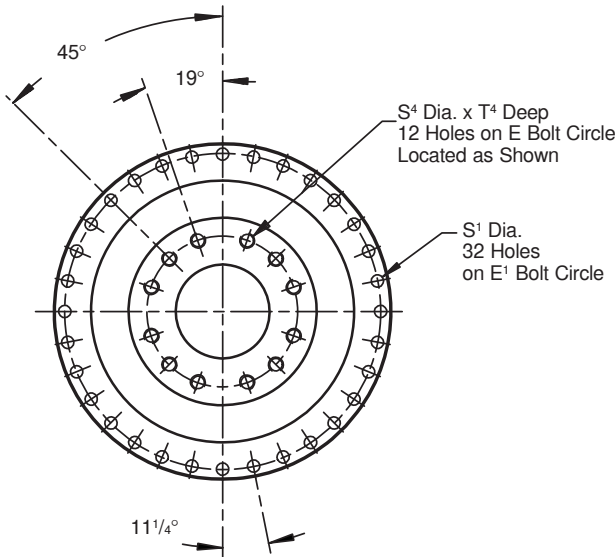
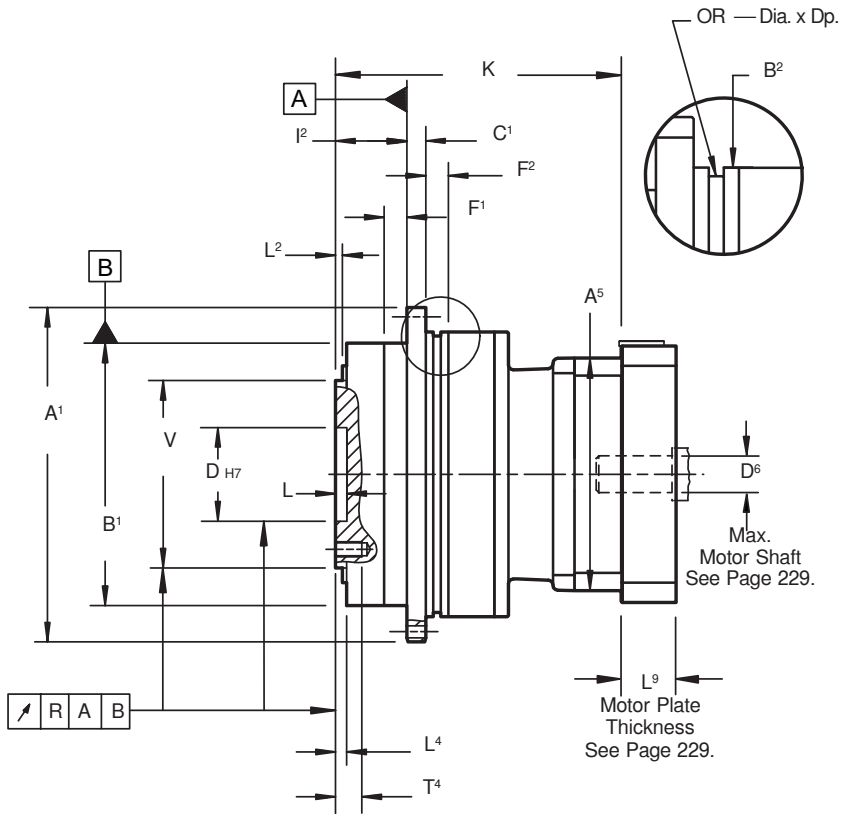
Drawing for Units
PHQ722 thru PHQ1033

PHQ7/PHQ8 OUTPUT SIDE

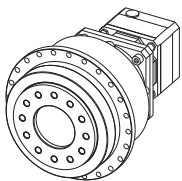
S⁴ Dia. x T⁴ Deep
12 Holes on E Bolt Circle
Located as Shown



S¹ Dia.
24 Holes on E¹ Bolt Circle



PHQ9/PHQ10 OUTPUT SIDE



Typical 3 Stage Configuration

If a planetary gearhead is to be mounted from "B²" side, specify when ordering. For proper mounting the paint must be eliminated and the tolerance held on that surface.



Side "B²" mounting is not possible with the Large Input.

Part No. Explanation

PHQ 8 2 2 F 0050 MT L

Unit No.
Generation No.
No. of Stages (2 = 2 Stage, 3 = 3 Stage)
Output Flange
Ratio (0050 = 5.0:1)
Motor Plate with TriAdapt Coupling
Large Input Option

"PHQ" Series Quattro Power ServoFit Precision Planetary Gearhead

When ordering a planetary gearhead, specify the motor manufacturer and part number, provide the motor drawing with dimensions, or specify the motor mounting dimensions. (See Page 229.)



"PHQ" Series ServoFit® Precision Planetary Gearhead Dimensional Data



Table No. 1 "PHQ" Series – Gearhead with Motor Plate – Dimensions (mm/inches)

Unit	A ¹ h7	B ¹ h7	B ² h7	C ¹	D H7	E	E ¹	F ¹	F ²	I ²	L	L ²	L ⁴	OR
PHQ722/PHQ723	179 +.000/-0.040	140 +.000/-0.040	152 +.000/-0.040	10	50 +.025/-0	80	168	12	12	38	6	6	6	145x3
	7.047 +.0000/-0.0016	5.513 +.0000/-0.0016	5.984 +.0000/-0.0016	.39	1.969 +.0010/-0.0000	3.15	6.61	.47	.47	1.50	.24	.24	.24	5.71x.12
PHQ822/PHQ823	247 +.000/-0.046	200 +.000/-0.046	212 +.000/-0.046	12	80 +.030/-0	125	233	15	15	50	8	8	8.5	200x5
	9.724 +.0000/-0.0018	7.874 +.0000/-0.0018	8.346 +.0000/-0.0018	.47	3.150 +.0012/-0.0000	4.92	9.17	.59	.59	1.97	.31	.31	.33	7.87x.20
PHQ932/PHQ933	300 —	255 +.000/-0.052	255 +.000/-0.052	18	90 +.035/-0	145	280	20	33	66	12	11	12	238x5
	11.811	10.039 +.000/-0.0020	10.039 +.0000/-0.0020	.71	3.543 +.0014/-0.0000	5.71	11.02	.79	1.29	2.60	.47	.43	.47	9.37x.20
PHQ1032/PHQ1033	330 —	285 +.000/-0.057	285 +.000/-0.052	20	95 +.035/-0	166	310	20	20	75	10	15	15	270x6
	12.992	11.220 +.000/-0.0022	11.221 +.0000/-0.0020	.79	3.740 +.0014/-0.0000	6.53	12.20	.79	.79	2.95	.39	.59	.59	10.63x.24

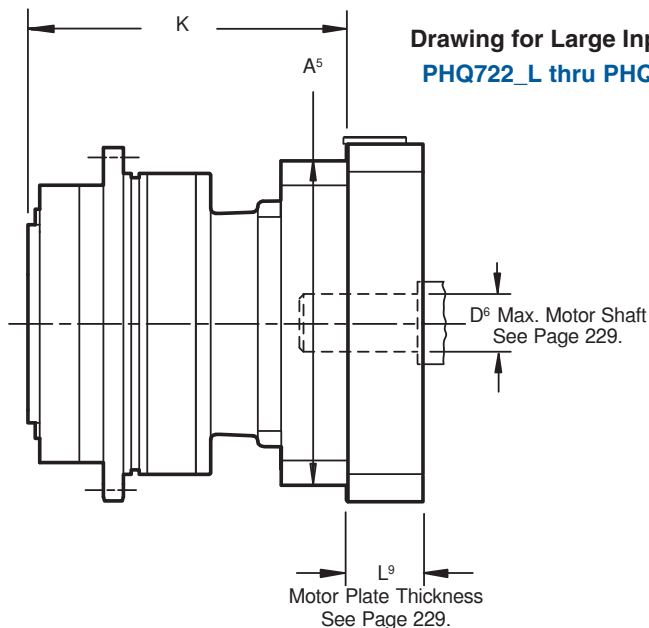
Table No. 2 "PHQ" Series – Dimensions (mm/inches)

Unit	R	S ¹	S ² H7	S ⁴	T ⁴	V h7
PHQ722/PHQ723	.025	6.6	8 +.015/-0.000	M10	16	100 +.000/-0.035
	.0010	.26	.315 +.0006/-0.0000		.63	3.937 +.000/-0.0014
PHQ822/PHQ823	.030	9	10 +.015/-0.000	M12	17	160 +.000/-0.040
	.0012	.35	.393 +.0006/-0.0000		.67	6.299 +.000/-0.0016
PHQ932/PHQ933	.030	13.5	—	M20	28	180 +.000/-0.040
	.0012	.53			1.10	7.087 +.000/-0.0016
PHQ1032/PHQ1033	.040 ⁽¹⁾	13.5	—	M24	35	200 +.000/-0.046
	.0016	.53			1.38	7.874 +.000/-0.0018

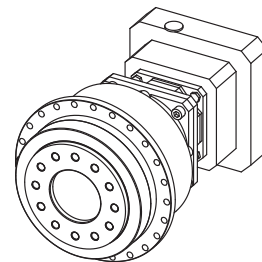
⁽¹⁾ "R" is .030 (.0012) for PHQ1033

Table No. 3 "PHQ" Series – Dimensions (mm/inches)

Unit	A ⁵		K—Standard		Unit	A ⁵		K—Large Input	
	mm	inches	mm	inches		mm	inches	mm	inches
PHQ722	115	4.53	190	7.48	PHQ722_L	145	5.71	204	8.03
PHQ723	100	3.94	236.5	9.31	PHQ723_L	115	4.53	248	9.76
PHQ822	145	5.71	251	9.88	PHQ822_L	190	7.48	268	10.55
PHQ823	115	4.53	303	11.93	PHQ823_L	145	5.71	204	8.03
PHQ932	190	7.48	349.5	13.74	PHQ932_L	225	8.85	357.5	14.07
PHQ933	145	5.71	417	16.42	PHQ933_L	190	7.48	434	17.08
PHQ1032	225	8.85	415	16.34	—	—	—	—	—
PHQ1033	190	7.48	503	19.80	PHQ1033_L	225	8.85	511	20.12



**Drawing for Large Input Units
PHQ722_L thru PHQ1033_L**



Typical Large Input Configuration

When ordering a planetary gearhead, specify the motor manufacturer and part number, provide the motor drawing with dimensions, or specify the motor mounting dimensions. (See Page 229.)