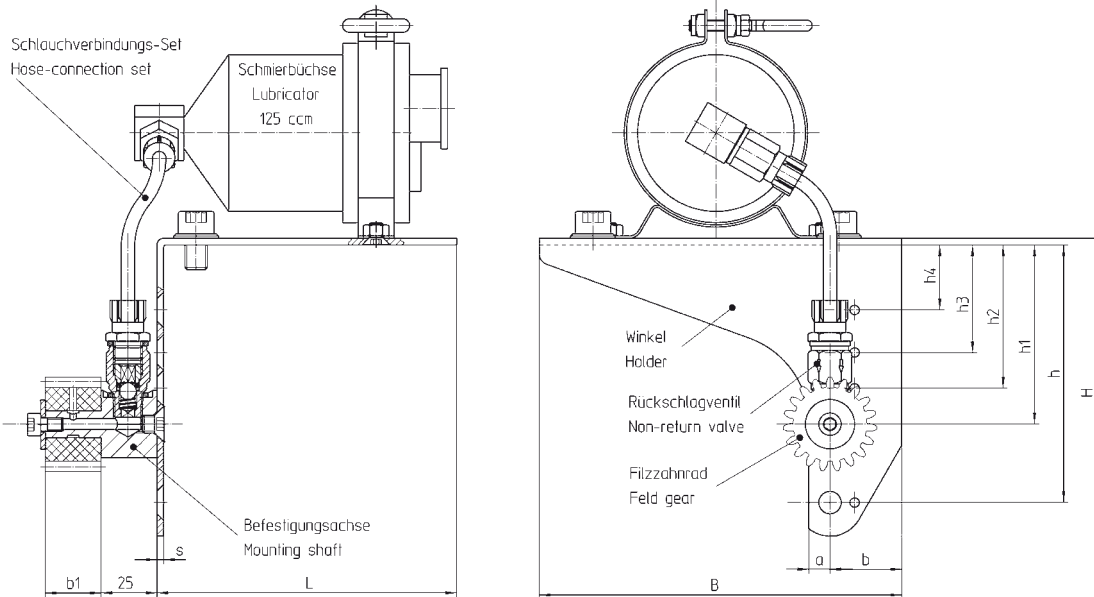




Schmiereinheit für HT-Servo-Antriebssysteme mit Klemmverbindung

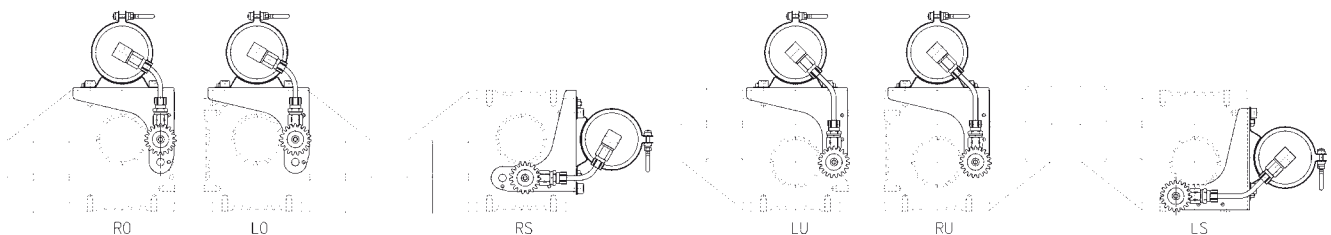
Lubrication unit for HT-Servo Drive System with output shaft for clamp connection



Bestell-Nr. Order code	m	z	Verzahnung Tooth system	h	h1	h2	h3	h4	b1	b2	s	a	b	H	B	L	kg
a₀ = 50				95	65	49	33	17									
65 83 192	2	19	gerade/straight	LU; RU	RO; LO; RS; LS				25	37	3	12	18	113	140	104	1,40
65 83 182	2	18	schräg/helical	LU; RU	RO; LO; RS; LS				25	37	3	12	18	113	140	104	1,40
65 83 193	3	19	gerade/straight	RS	LU; RU		RO; LO; LS		30	36	3	15	18	113	140	104	1,44
65 83 183	3	18	schräg/helical	RS	LU; RU		RO; LO; LS		30	36	3	15	18	113	140	104	1,44
65 83 194	4	19	gerade/straight			LU; RU	RS	RO; LO; LS	40	32	3	15	18	113	140	104	1,54
65 83 184	4	18	schräg/helical			LU; RU	RS	RO; LO; LS	40	32	3	15	18	113	140	104	1,54
a₀ = 63				115	80	64	48	29									
65 84 193	3	19	gerade/straight	LU; RU	RO; LO; RS	LS			30	36	3	9	32	133	162	134	1,90
65 84 183	3	18	schräg/helical	LU; RU	RO; LO; RS	LS			30	36	3	9	32	133	162	134	1,90
65 84 194	4	19	gerade/straight				RO; LO; LS		40	32	3	9	32	133	162	134	2,00
65 84 184	4	18	schräg/helical				RO; LO; LS		40	32	3	9	32	133	162	134	2,00
a₀ = 80				130	103	85	57	36									
65 85 194	4	19	gerade/straight	LU; RU	LU*; RU*	RO; LO; RS; LS		RO*; LO*; RS*; LS*	40	32	3	9	42	148	198	159	2,50
65 85 184	4	18	schräg/helical	LU; RU	LU*; RU*	RO; LO; RS; LS		RO*; LO*; RS*; LS*	40	32	3	9	42	148	198	159	2,50
65 85 185	5	19	gerade/straight				RO; LO; RS; LS		50	35	3	9	42	148	198	159	2,70
65 85 175	5	18	schräg/helical				RO; LO; RS; LS		50	35	3	9	42	148	198	159	2,70
65 85 186	6	19	gerade/straight					RO; LO; RS; LS	60	37	3	9	42	148	198	159	2,80
65 85 176	6	18	schräg/helical					RO; LO; RS; LS	60	37	3	9	42	148	198	159	2,80
a₀ = 100				140	102	84	52	32									
65 86 185	5	18	gerade/straight	LU; RU	RO; LO; RS; LS				50	35	4	10	44	169	230	182	3,30
65 86 175	5	17	schräg/helical	LU; RU	RO; LO; RS; LS				50	35	4	10	44	169	230	182	3,30
65 86 186	6	18	gerade/straight				RO; LO; RS; LS		60	37	4	10	44	169	230	182	3,50
65 86 176	6	17	schräg/helical				RO; LO; RS; LS		60	37	4	10	44	169	230	182	3,50
65 86 188	8	18	gerade/straight				RS	RO; LO; LS	80	38	4	10	44	169	230	182	4,30
65 86 178	8	17	schräg/helical				RS	RO; LO; LS	80	38	4	10	44	169	230	182	4,30

* bei Ritzelwellen mit z = 30 / for pinion with z = 30

Montagemöglichkeiten / Units mounting possibilities

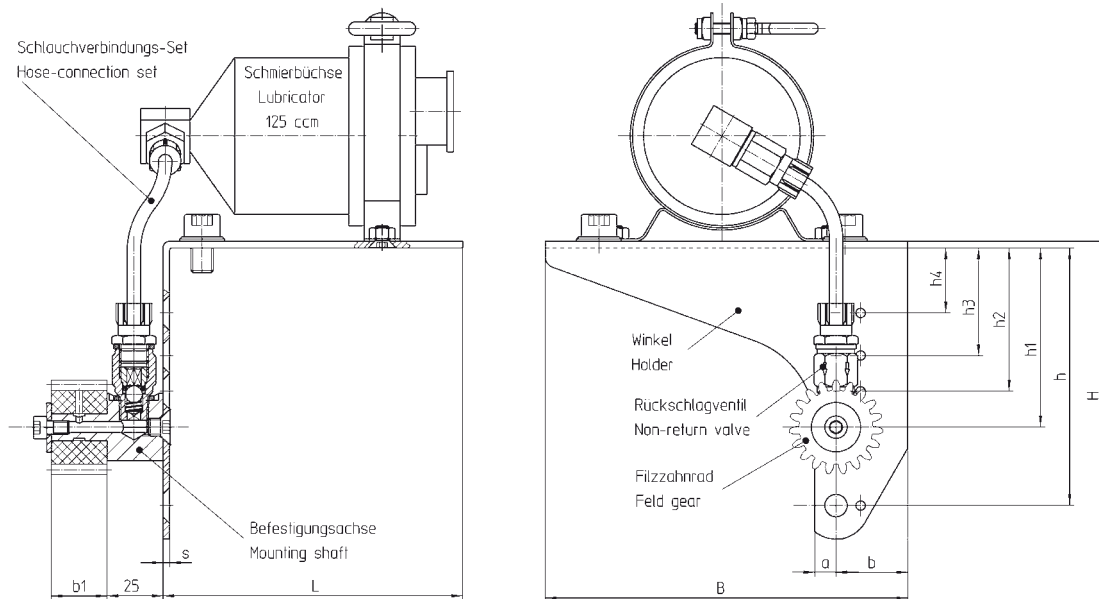


Bestellbeispiel: a = 80; m = 4 schrägverzahnt; nach Bild LO ⇒ **65 85 184** (Filzzahnrad montiert nach Maß „h2 = 85“ von Auflagefläche-Schmiereinheit).

Ordering example: a = 80; m = 4 helical tooth system, Fig. LO ⇒ 65 85 184 (Felt gear assembled according to the dimension „h2 = 85“ of the mounting surface).



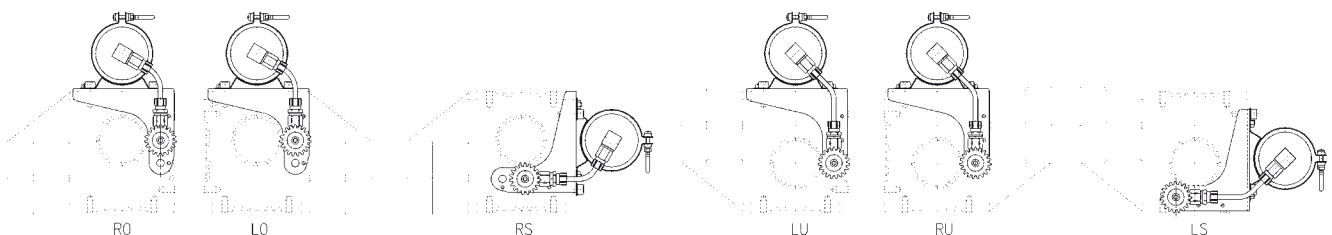
Schmiereinheit für HP-/E-/B-Servo-Antriebssysteme / Lubrication Unit for HP-/E-/B-Servo Drive System



Bestell-Nr. Order code	m	z	Verzahnung Tooth system	h	h1	h2	h3	h4	b1	s	a	b	H	B	L	kg
a_o = 50				95	65											
65 93 192	2	19	gerade / straight	LU; RU; LS	RO; LO; RS				25	3	15	18	113	134	104	1,40
65 93 182	2	18	schräg / helical	LU; RU; LS	RO; LO; RS				25	3	15	18	113	134	104	1,40
65 93 193	3	19	gerade / straight	RS	LU; RU	RO; LO; LS			30	3	15	18	113	134	104	1,44
65 93 183	3	18	schräg / helical	RS	LU; RU	RO; LO; LS			30	3	15	18	113	134	104	1,44
a_o = 63				115	80	64	48	29								
65 94 192	2	19	gerade / straight	LU; RU	RO; LO; RS	LS			25	3	9	32	133	162	134	1,72
65 94 182	2	18	schräg / helical	LU; RU	RO; LO; RS	LS			25	3	9	32	133	162	134	1,72
65 94 193	3	19	gerade / straight	RS	LU; RU		RO; LO; LS		30	3	9	32	133	162	134	1,79
65 94 183	3	18	schräg / helical	RS	LU; RU		RO; LO; LS		30	3	9	32	133	162	134	1,79
65 94 194	4	19	gerade / straight			LU; RU	RS	RO; LO; LS	40	3	9	32	133	162	134	1,90
65 94 184	4	18	schräg / helical			LU; RU	RS	RO; LO; LS	40	3	9	32	133	162	134	1,90
a_o = 80				130	103	85	57	-								
65 95 193	3	19	gerade / straight	LU; RU		RO; LO; RS; LS			30	3	9	42	148	198	159	2,39
65 95 183	3	18	schräg / helical	LU; RU		RO; LO; RS; LS			30	3	9	42	148	198	159	2,39
65 95 194	4	19	gerade / straight		LU; RU	RS	RO; LO; LS		40	3	9	42	148	198	159	2,50
65 95 184	4	18	schräg / helical		LU; RU	RS	RO; LO; LS		40	3	9	42	148	198	159	2,50
a_o = 100				140	102	84	52	-								
65 96 194	4	19	gerade / straight	LU; RU; RS	RO; LO; LS; LU*; RU*	RS*	RO*; LO*; LS*		40	4	11	44	169	230	182	2,60
65 96 184	4	18	schräg / helical	LU; RU; RS	RO; LO; LS; LU*; RU*	RS*	RO*; LO*; LS*		40	4	11	44	169	230	182	2,60
65 96 185	5	18	gerade / straight	LU; RU	RS	RO; LO; LS			50	4	11	44	169	230	182	3,30
65 96 175	5	17	schräg / helical	LU; RU	RS	RO; LO; LS			50	4	11	44	169	230	182	3,30
a_o = 125				198	171	128	102	-								
65 97 185	5	18	gerade / straight	LU; RU		RO; LO; RS; LS			50	4	15	63	227	290	225	3,73
65 97 175	5	17	schräg / helical	LU; RU		RO; LO; RS; LS			50	4	15	63	227	290	225	3,73
65 97 186	6	18	gerade / straight	RS	LU; RU	RO; LO	LS		60	4	15	63	227	290	225	3,88
65 97 176	6	17	schräg / helical	RS	LU; RU	RO; LO	LS		60	4	15	63	227	290	225	3,88

* bei Ritzelwellen mit z = 30 / for pinion with z = 30

Montagemöglichkeiten / Units mounting possibilities



Bestellbeispiel: a = 80; m = 4 schrägverzahnt; nach Bild LO ⇒ **65 95 184** (Filzzahnrad montiert nach Maß „h3 = 57“ von Auflagefläche-Schmiereinheit).

Ordering example: a = 80; m = 4 helical tooth system, Fig. LO ⇒ 65 95 184 (Felt gear assembled according to the dimension „h3 = 57“ of the mounting surface).