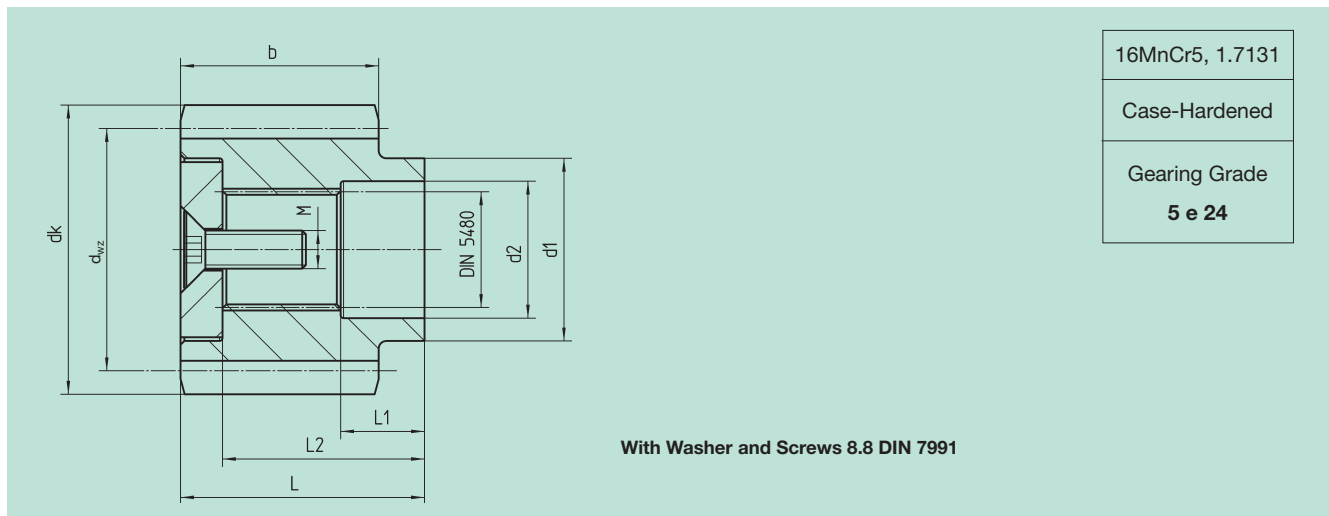
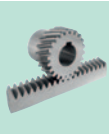




### Helical Tooth System, 19° 31' 42" left-hand



Order Code	N° of Teeth	Module	Profile Modification Factor	$d_{wz}$	$d_k$	$d_1$	L	$d_2$	$L_1$	$L_2$	b	M	DIN 5480	kg
79 11 538	38	1.5	-	60.48	63.48	30	33	24	12	27.5	20	M8x25	N22x1.25x30x16x7H	0.1
79 20 515	15	2	0.5922	34.20	38.0	24	32	18	11	26.5	26	M5x16	N16x0.8x30x18x7H	0.2
79 20 516	16	2	0.6117	36.40	40.1	24	32	18	11	26.5	26	M5x16	N16x0.8x30x18x7H	0.2
79 20 518	18	2	0.5000	40.20	44.0	24	32	18	11	26.5	26	M5x16	N16x0.8x30x18x7H	0.3
79 21 518	18	2	0.5000	40.20	44.0	30	33	24	12	27.5	26	M8x25	N22x1.25x30x16x7H	0.3
79 21 520	20	2	0.4900	44.40	48.2	30	33	24	12	27.5	26	M8x25	N22x1.25x30x16x7H	0.3
79 21 522	22	2	0.4786	48.60	52.5	30	33	24	12	27.5	26	M8x25	N22x1.25x30x16x7H	0.4
79 21 525	25	2	-	53.05	57.05	30	33	24	12	27.5	26	M8x25	N22x1.25x30x16x7H	0.4
79 22 523	23	2	0.4981	50.80	54.6	40	34	35	13	27.0	26	M12x35	N32x1.25x30x24x7H	0.4
79 22 525	25	2	0.4871	55.00	59.0	40	34	35	13	27.0	26	M12x35	N32x1.25x30x24x7H	0.4
79 22 527	27	2	0.3760	58.80	62.6	40	34	35	13	27.0	26	M12x35	N32x1.25x30x24x7H	0.5
79 33 520	20	3	0.4563	66.40	72.2	50	51	41	20	41.0	31	M16x45	N40x2x30x18x7H	0.7
79 33 522	22	3	0.4620	72.80	78.6	50	51	41	20	41.0	31	M16x45	N40x2x30x18x7H	0.8
79 33 524	24	3	0.4676	79.20	85.0	50	51	41	20	41.0	31	M16x45	N40x2x30x18x7H	1.0
79 44 520	20	4	0.4000	88.08	96.1	75	54	56	20	44.0	41	M20x50	N55x2x30x26x7H	1.5
79 45 525	25	4	0.3400	108.82	116.8	90	65	72	24	55.0	41	M20x50	N70x2x30x34x7H	3.0



Calculation of center distance a between gearwheel and rack.

