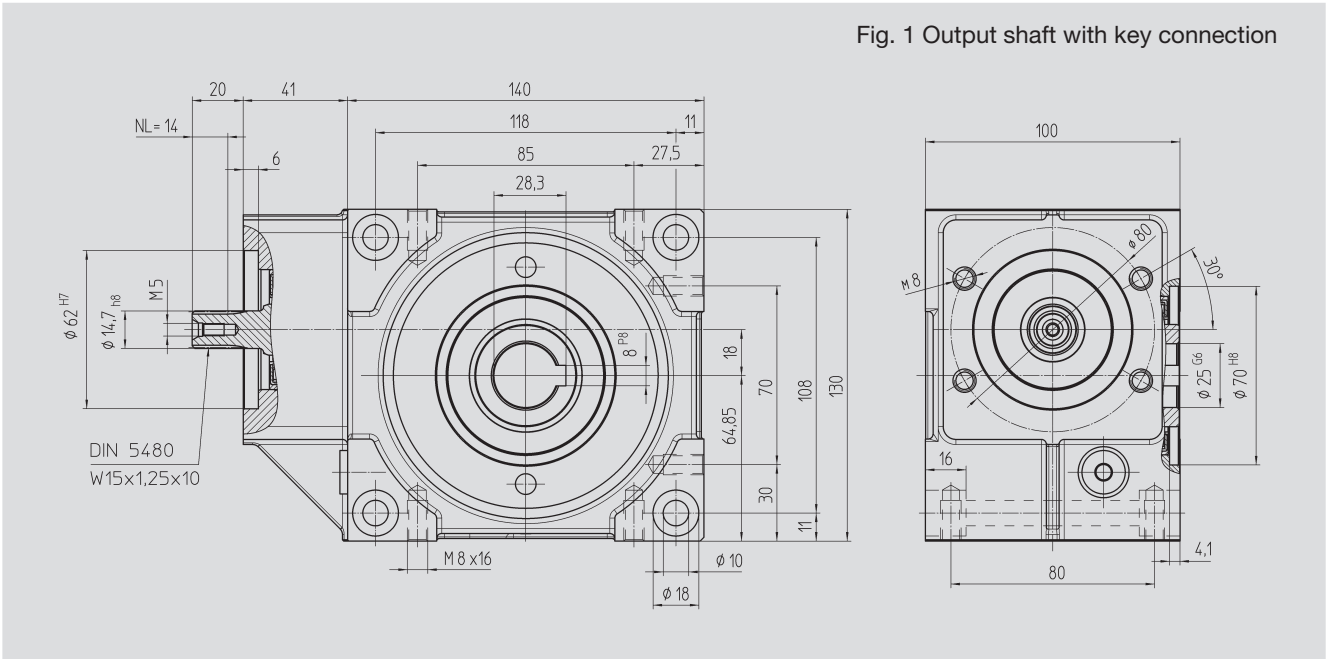
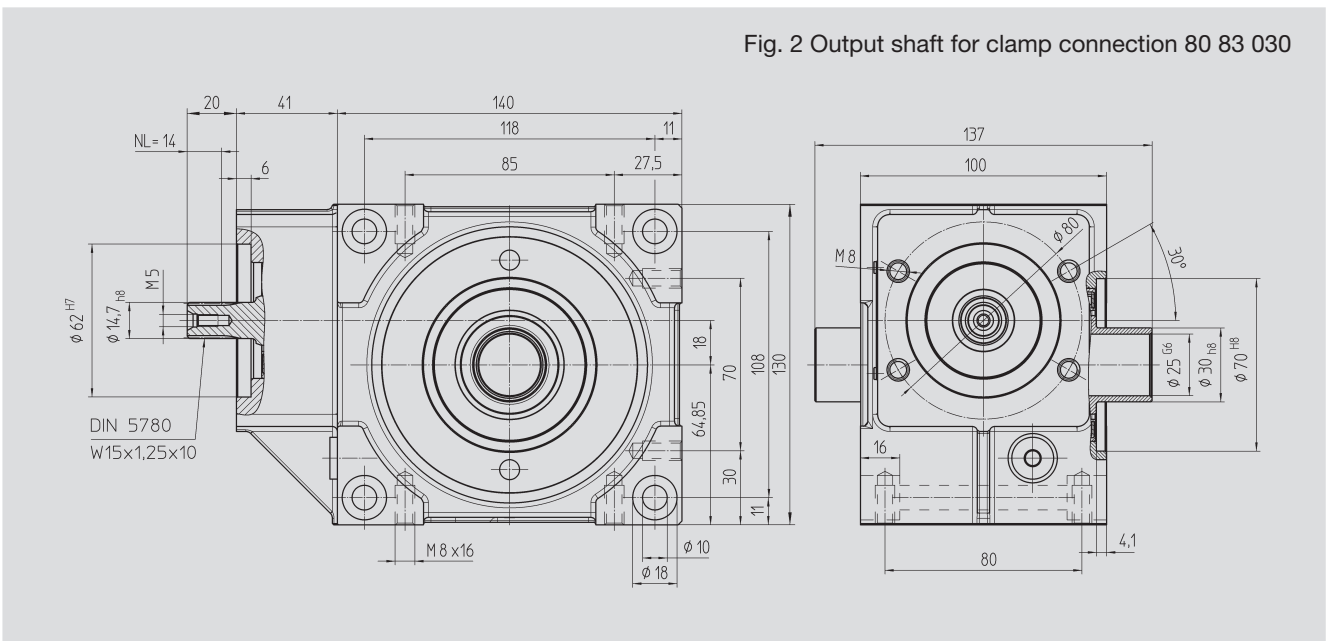




Size BG 50



Size BG 50

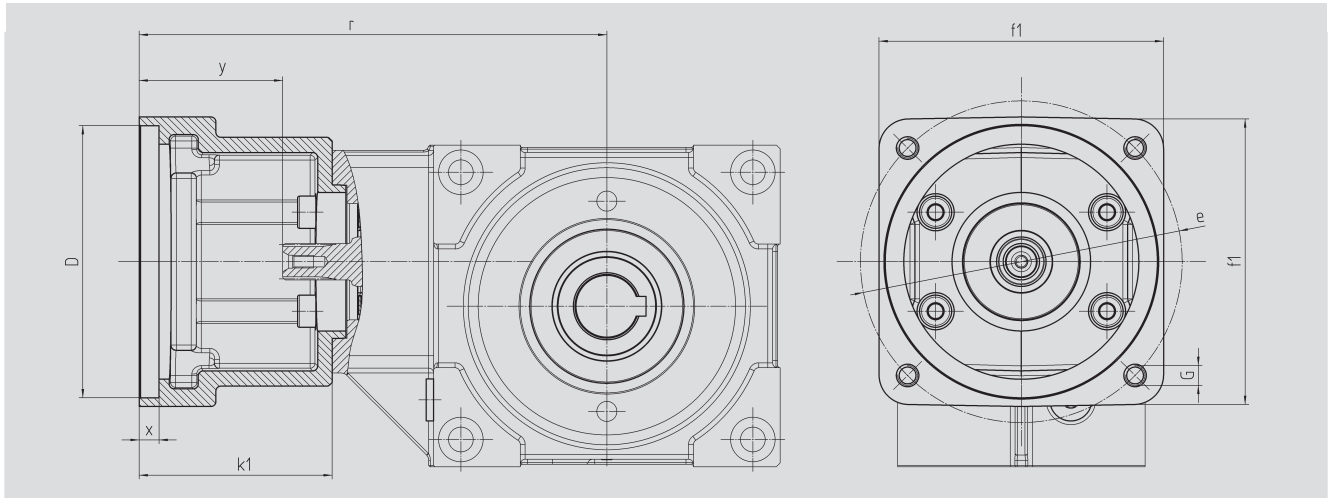


Order Code Fig. 1	Order Code Fig. 2	Ratio i	T kg	J _{red} 10 ⁻⁴ kg m ²
51 23 005	51 33 005	4.75	6.3	0.576
51 23 007	51 33 007	6.75	6.3	0.330
51 23 009	51 33 009	9.25	6.3	0.194

With food grade oil, order code 51 23 1xx / 51 33 1xx. With ATEX version with food grade oil, order code 51 23 2xx / 51 33 2xx.



Motor Flange



Size 50 mm

Order Code	D ^{G7}	k ₁	r	x	y	f ₁	e	G	T kg
65 59 301	95.0	62	173	6	42	100	115	M8	1.0
65 59 302	50.0	62	173	6	42	100	70, 95, 115	M4,M6,M8	1.0
65 59 303	80.0	62	173	6	42	100	100	M6	1.0
65 59 304	95.0	78	189	6	58	115	130	M8	1.0
65 59 305	95.0	72	183	5	52	105	115	M8	1.0
65 59 306	60.0	74	184	7	54	100	75, 90, 115	M5,M5,M8	1.0
65 59 307	70.0	70	181	7	50	100	90, 115	M6,M8	1.0
65 59 401	95.0	73	184	7	53	100	115	M8	1.0
65 59 402	110.0	78	189	7	58	115	130	M8	1.0
65 59 403	95.0	73	184	7	53	115	130	M8	1.0
65 59 404	110.0	73	184	7	53	115	130	M8	1.0
65 59 405	95.0	78	189	7	58	140	165	M10	1.0
65 59 406	110.0	78	189	7	58	140	165	M10	1.0
65 59 407	130.0	78	189	7	58	140	165	M10	1.0
65 59 409	130.0	98	209	7	78	140	165	M10	1.5
65 59 410	110.0	74	185	7	54	120	145	M8	1.0
65 59 411	110.0	84	195	7	64	120	145	M8	1.5
65 59 412	114.3	105	216	7	85	180	200	M12	3.5
65 59 413	114.3	139	150	7	119	180	200	M12	6.0
65 59 414	114.3	91	202	7	71	180	200	M12	2.5
65 59 415	110.0	89	200	7	69	120	145	M8	1.5

The order should contain gear box 51 23 0xx / 51 33 0xx and flange 65 59 3xx or 4xx.