



Center Distance

$a_o = 32 \text{ mm}$

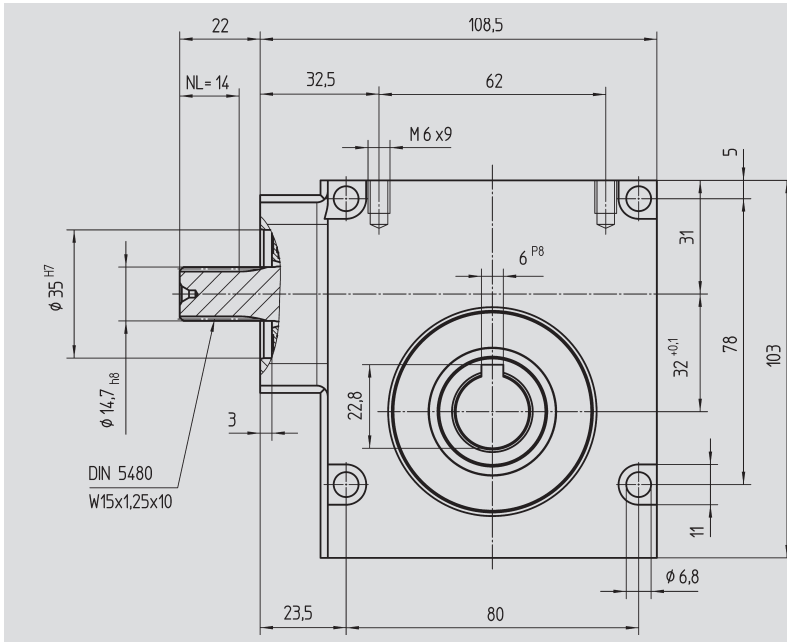


Fig. 1 Output shaft with key connection

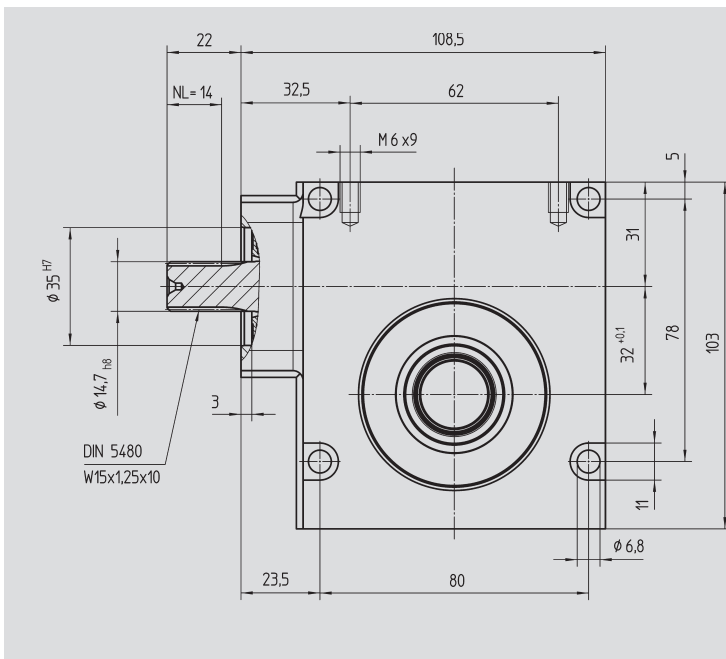
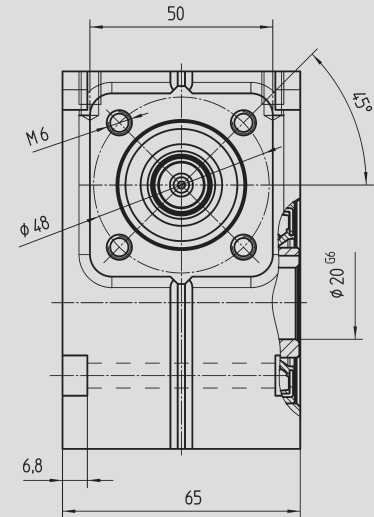
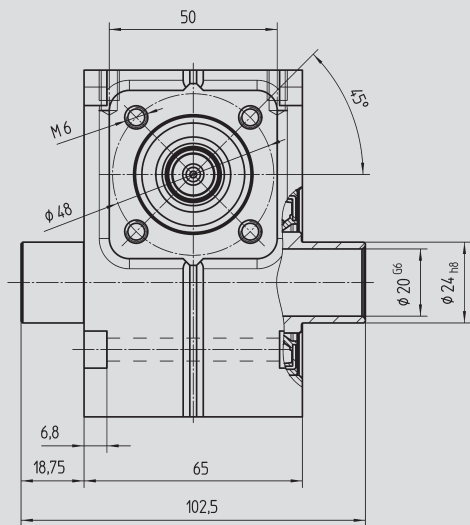


Fig. 2 Output shaft for clamp connection 80 81 024



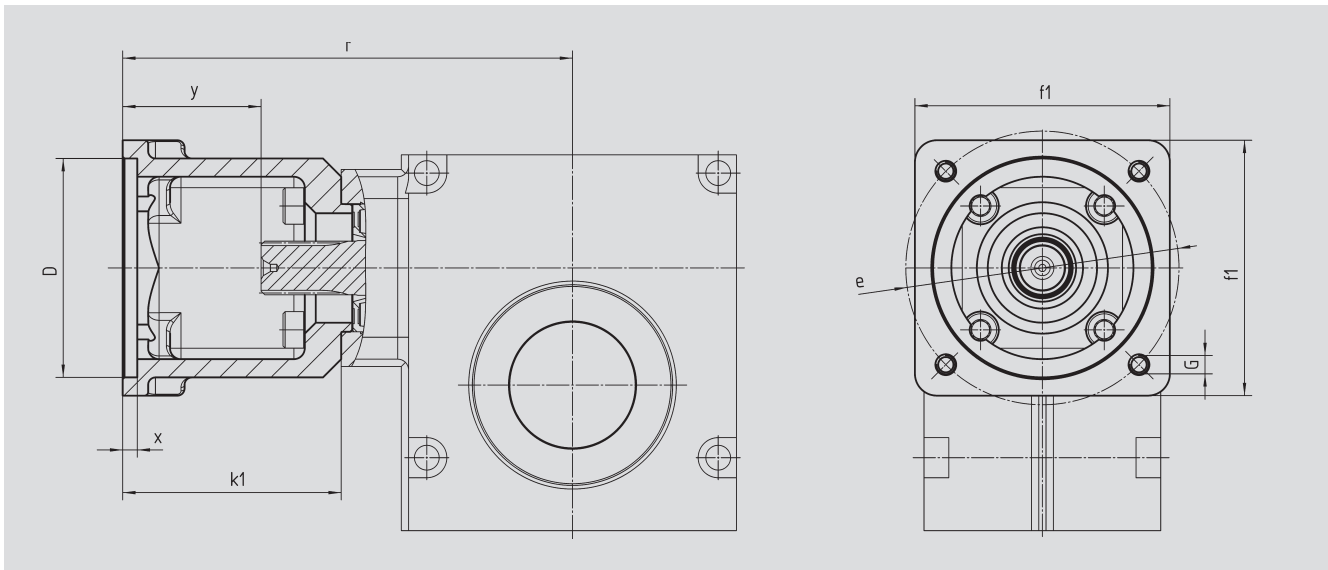
Order Code Fig. 1	Fig. 2	Ratio i	kg	$J_{red} 10^{-4}$ kg m ²
59 01 005	59 11 005	4.75	2	0.8280
59 01 007	59 11 007	6.75	2	0.4140
59 01 009	59 11 009	9.25	2	0.3490
59 01 015	59 11 015	14.50	2	0.2800
59 01 020	59 11 020	19.50	2	0.1960
59 01 029	59 11 029	29.00	2	0.2694
59 01 039	59 11 039	39.00	2	0.2310
59 01 050	59 11 050	50.00	2	0.2140

With food grade oil, order code 59 01 1xx / 59 11 1xx

With ATEX version with food grade oil, order code 59 01 2xx / 59 11 2xx




Motor Flange



Center Distance

$a_o = 32 \text{ mm}$

Order Code	D^{G7}	k_1	r	x	y	f_1	e	G	 kg
65 59 101	40.0	56.5	120.0	2.5	34.5	60	63	M5	0.26
65 59 102	50.0	64.0	127.5	4.0	42.0	60	70	M5	0.29
65 59 103	60.0	60.0	123.5	3.5	38.0	70	75	M5	0.28
65 59 104	80.0	64.0	127.5	4.5	42.0	85	100	M6	0.30
65 59 105	60.0	64.0	127.5	4.5	42.0	85	90	M5	0.30
65 59 107	40.0	56.5	120.0	2.5	34.5	60	63	M4	0.31
65 59 108	70.0	64.0	127.5	5.0	42.0	85	90	M6	0.26

The order should contain gear box 59 01 0xx / 59 11 0xx and flange 65 59 1xx.