



Center Distance

$a_o = 50 \text{ mm}$

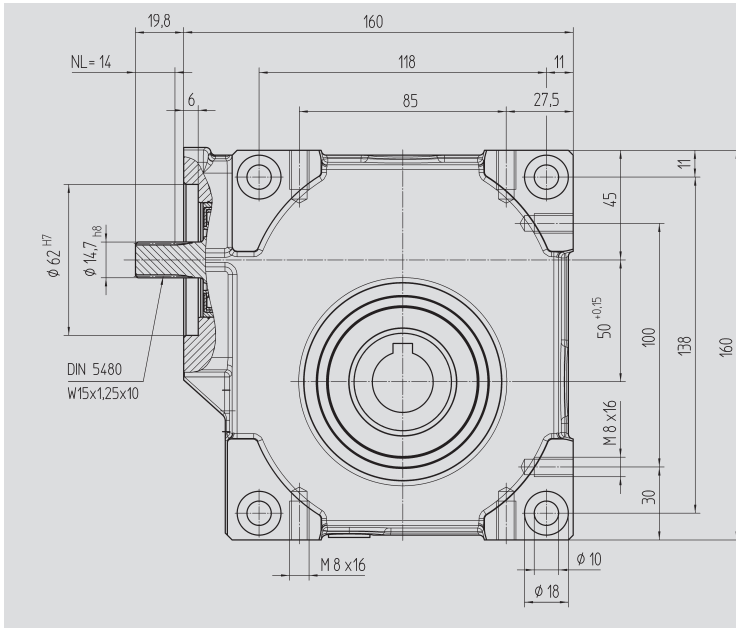


Fig. 1 Output shaft with key connection

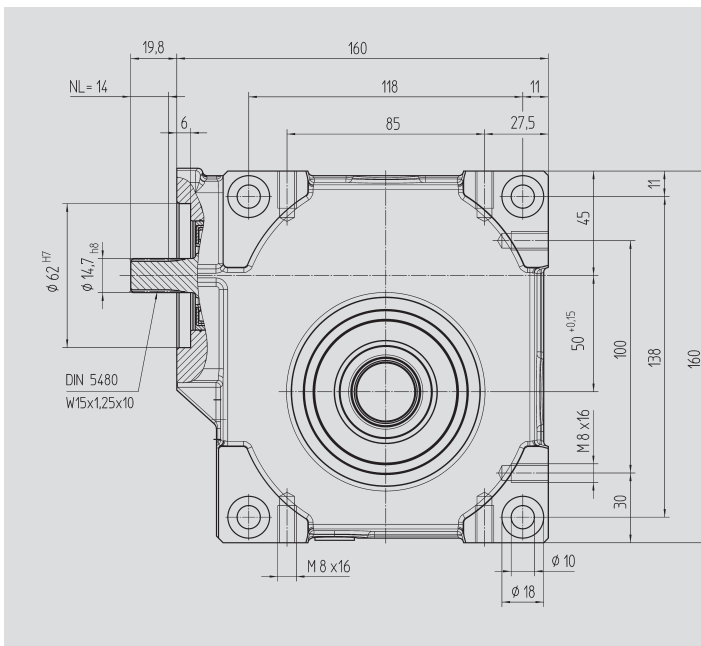
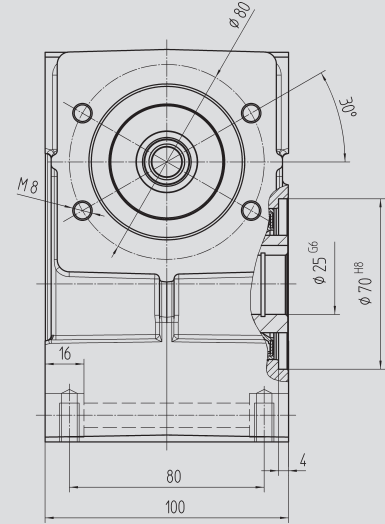
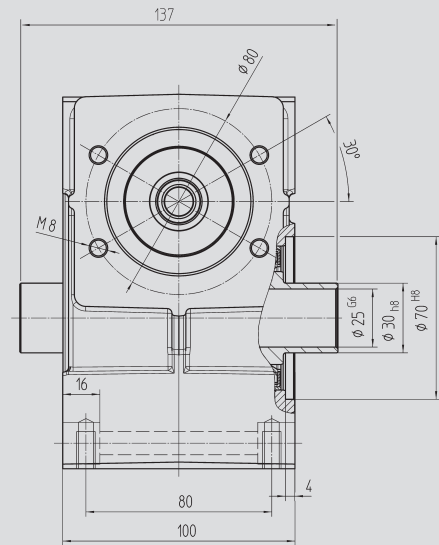


Fig. 2 Output shaft for clamp connection 80 83 030



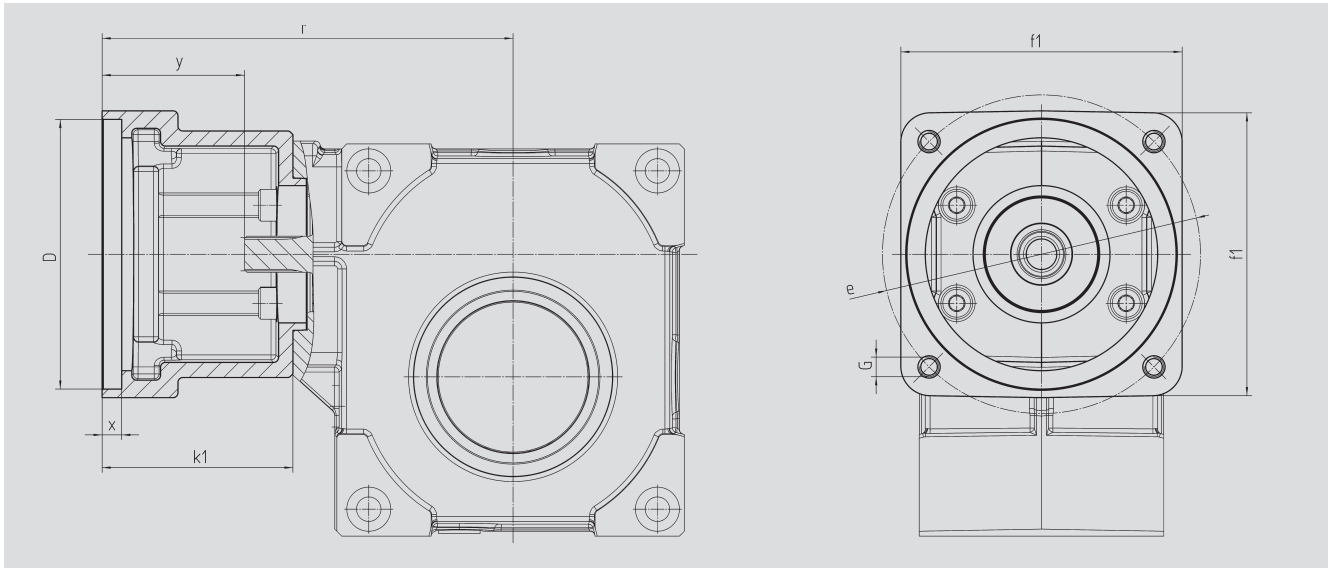
| Order Code Fig. 1 | Fig. 2 | Ratio <i>i</i> | kg | $J_{red} 10^{-4}$ kg m ² |
|----------------------|-----------|----------------|-----|--|
| 59 03 005 | 59 13 005 | 4.75 | 6.5 | 0.8280 |
| 59 03 007 | 59 13 007 | 6.75 | 6.5 | 0.4140 |
| 59 03 009 | 59 13 009 | 9.25 | 6.5 | 0.3490 |
| 59 03 015 | 59 13 015 | 14.50 | 6.5 | 0.2800 |
| 59 03 020 | 59 13 020 | 19.50 | 6.5 | 0.1960 |
| 59 03 029 | 59 13 029 | 29.00 | 6.5 | 0.2694 |
| 59 03 039 | 59 13 039 | 39.00 | 6.5 | 0.2310 |
| 59 03 050 | 59 13 050 | 50.00 | 6.5 | 0.2140 |

With food grade oil, order code 59 03 1xx / 59 13 1xx

With ATEX version with food grade oil, order code 59 03 2xx / 59 13 2xx



Motor Flange



Center Distance

$a_o = 50 \text{ mm}$

| Order Code | D ^{G7} | k ₁ | r | x | y | f ₁ | e | G | kg |
|------------|-----------------|----------------|-----|------|-----|----------------|-------------|------------|------|
| 65 59 301 | 95.0 | 62 | 152 | 12.5 | 42 | 100 | 115 | M8 | 0.60 |
| 65 59 302 | 50.0 | 62 | 152 | 10.0 | 42 | 100 | 70, 95, 115 | M4, M6, M8 | 0.70 |
| 65 59 303 | 80.0 | 62 | 152 | 10.0 | 42 | 100 | 100 | M6 | 0.65 |
| 65 59 304 | 95.0 | 78 | 168 | 10.0 | 59 | 115 | 130 | M8 | 0.80 |
| 65 59 305 | 95.0 | 72 | 162 | 8.0 | 52 | 100 | 115 | M8 | 0.75 |
| 65 59 306 | 60.0 | 74 | 164 | 21.0 | 54 | 100 | 75, 90, 115 | M5, M5, M8 | 0.90 |
| 65 59 307 | 70.0 | 70 | 160 | 21.0 | 50 | 100 | 90, 115 | M6, M8 | 0.80 |
| 65 59 401 | 95.0 | 73 | 163 | 8.0 | 53 | 100 | 115 | M8 | 0.75 |
| 65 59 402 | 110.0 | 78 | 168 | 8.0 | 59 | 115 | 130 | M8 | 0.80 |
| 65 59 403 | 95.0 | 73 | 163 | 12.0 | 53 | 115 | 130 | M8 | 0.75 |
| 65 59 404 | 110.0 | 73 | 163 | 12.0 | 53 | 115 | 130 | M8 | 0.70 |
| 65 59 405 | 95.0 | 78 | 168 | 11.0 | 59 | 140 | 165 | M10 | 1.20 |
| 65 59 406 | 110.0 | 78 | 168 | 11.0 | 59 | 140 | 165 | M10 | 1.15 |
| 65 59 407 | 130.0 | 78 | 168 | 11.0 | 59 | 140 | 165 | M10 | 1.00 |
| 65 59 409 | 130.0 | 98 | 188 | 14.0 | 78 | 140 | 165 | M10 | 1.10 |
| 65 59 410 | 110.0 | 74 | 164 | 8.0 | 54 | 120 | 145 | M8 | 1.00 |
| 65 59 411 | 110.0 | 84 | 174 | 8.0 | 64 | 120 | 145 | M8 | 1.20 |
| 65 59 412 | 114.3 | 105 | 195 | 8.0 | 85 | 180 | 200 | M12 | 3.70 |
| 65 59 413 | 114.3 | 139 | 229 | 8.0 | 119 | 180 | 200 | M12 | 3.35 |
| 65 59 414 | 114.3 | 91 | 181 | 8.0 | 71 | 180 | 200 | M12 | 2.65 |
| 65 59 415 | 110.0 | 89 | 179 | 8.0 | 69 | 120 | 145 | M8 | 1.30 |

The order should contain gear box 59 03 0xx / 59 13 0xx and flange 65 59 3xx or 4xx.