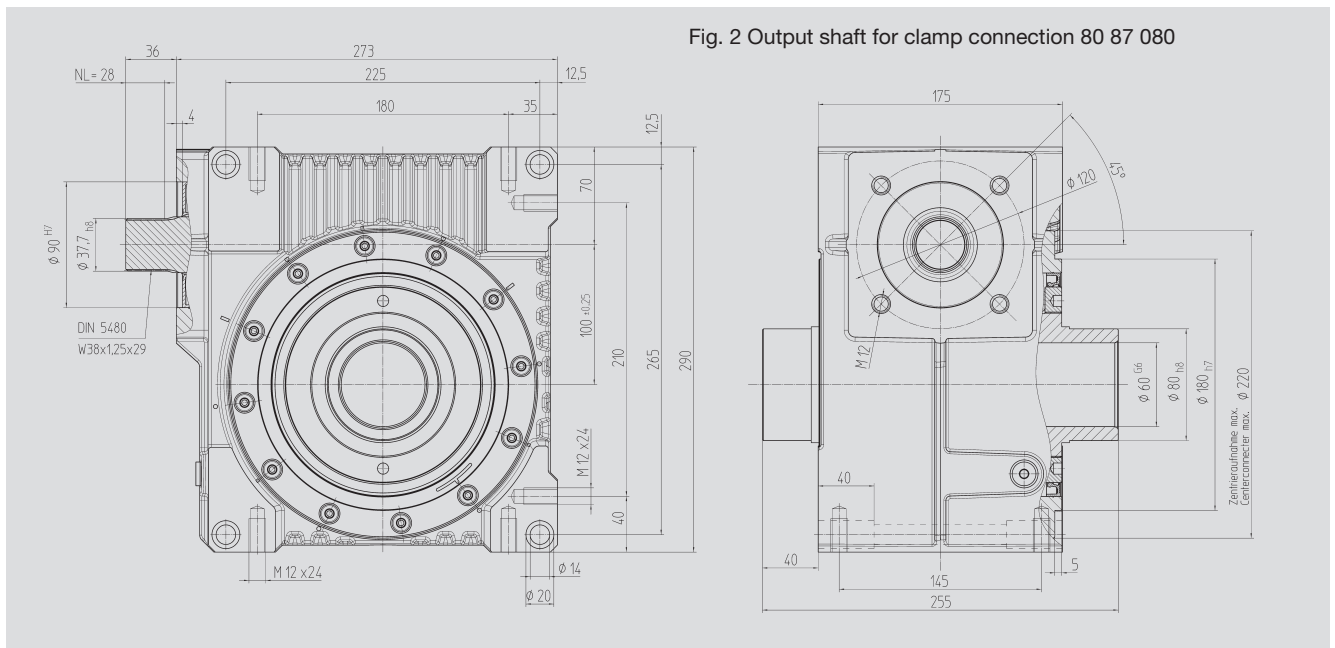
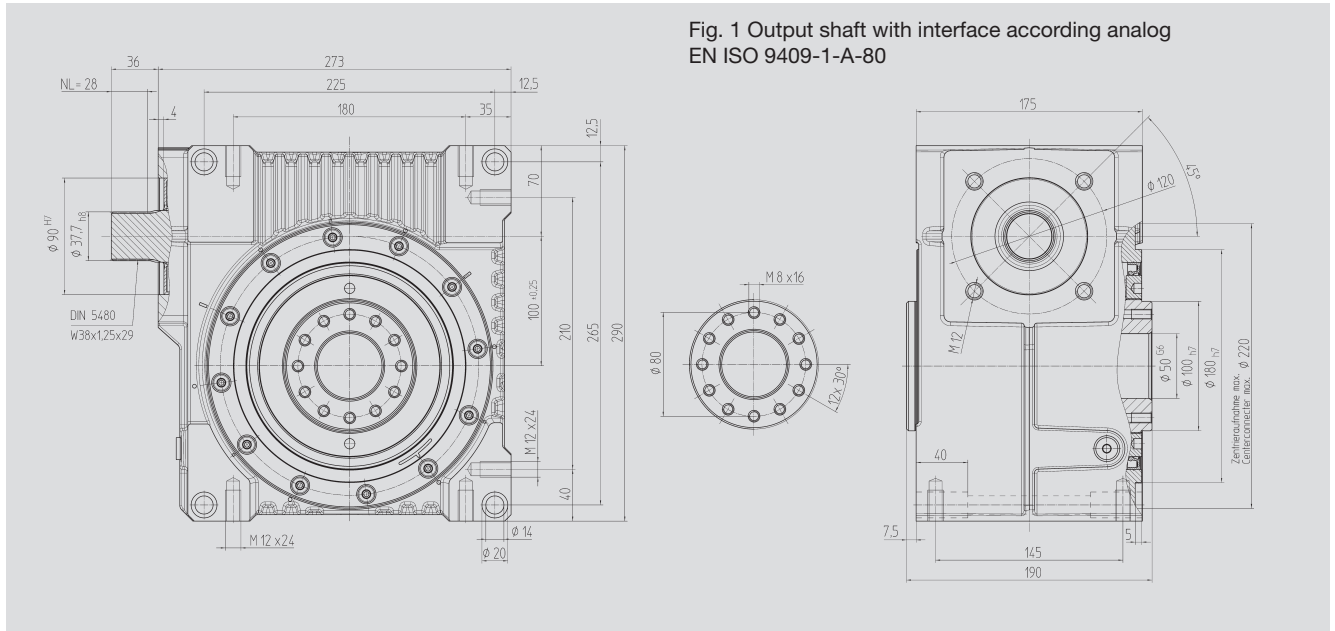




Center Distance

$a_o = 100 \text{ mm}$



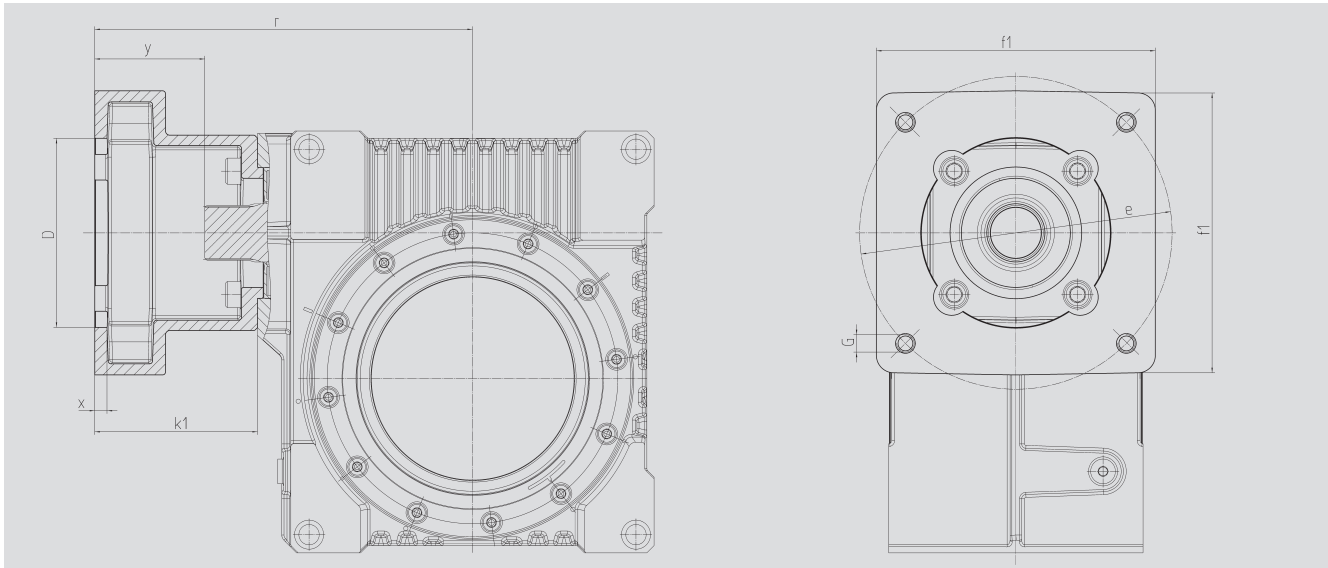
Order Code Fig. 1	Fig. 2	Ratio <i>i</i>		$J_{red} \cdot 10^{-4}$ kg m ²
98 06 005	98 16 005	4.75	38	22.9320
98 06 007	98 16 007	6.75	38	12.8835
98 06 009	98 16 009	9.25	38	8.0975
98 06 015	98 16 015	14.50	38	7.2190
98 06 020	98 16 020	19.50	38	5.4030
98 06 029	98 16 029	29.00	38	4.7207
98 06 039	98 16 039	39.00	38	8.4300
98 06 052	98 16 052	52.00	38	9.7400

With food grade oil, order code 98 06 1xx / 98 16 1xx

With ATEX version with food grade oil, order code 98 06 2xx / 98 16 2xx



Motor Flange



Center Distance

$a_o = 100 \text{ mm}$

Order Code	D ^{G7}	k ₁	r	x	y	f ₁	e	G	kg
65 59 501	110.0	92.0	240.0	8.0	55.0	140	165	M10	2.00
65 59 502	130.0	92.0	240.0	8.0	55.0	140	165	M10	1.90
65 59 503	180.0	122.0	270.0	8.0	85.0	192	215	M12	3.40
65 59 504	180.0	127.0	275.0	8.0	90.0	192	215	M12	3.80
65 59 505	180.0	112.0	260.0	10.0	75.0	192	215	M12	2.70
65 59 506	130.0	112.0	260.0	10.0	75.0	192	215	M12	3.00
65 59 507	130.0	112.0	260.0	10.0	75.0	140	165	M10	2.50
65 59 508	110.0	90.0	238.0	8.0	53.0	140	145	M8	2.00
65 59 509	110.0	108.5	256.5	8.0	71.5	140	145	M8	2.50
65 59 510	114.3	129.5	277.5	8.0	92.5	180	200	M12	5.00
65 59 511	114.3	163.5	311.5	8.0	126.5	180	200	M12	4.20
65 59 512	114.3	105.5	253.5	8.0	68.5	180	200	M12	3.50
65 59 513	110.0	113.5	261.5	8.0	76.5	140	145	M8	2.70

The order should contain gear box 98 06 0xx / 98 16 0xx and flange 65 59 5xx.