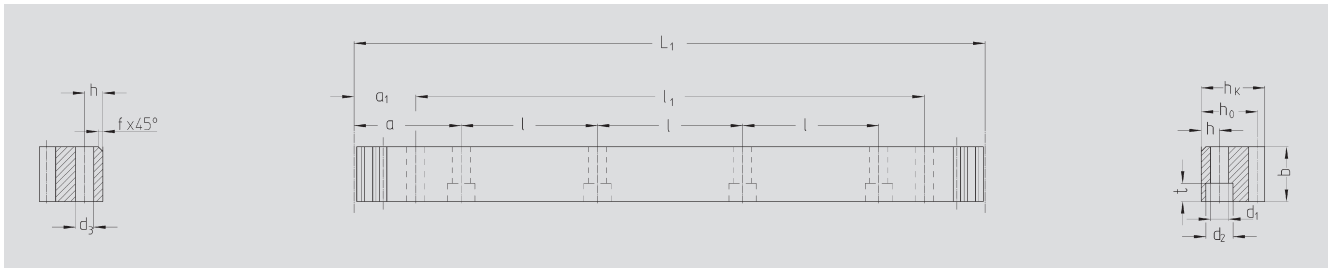




ATLANTA-Quality 5

StrongLine



Order Code	Module	L ₁	N° of teeth	b ^{+0,4}	h _k	h ₀	f	a	l	N° of holes	h	d ₁	d ₂	t	a ₁	l ₁	d ₃	kg
28 35 100	3	1017.88	108	29	29	26	2.0	63.61	127.23	8	10	12	17.5	11	28.6	960.6	11.7	5.9
28 45 100	4	1005.31	80	39	39	35	2.0	62.83	125.66	8	13	16	23.0	15	30.3	944.7	15.7	10.7
28 55 100	5	1005.31	64	49	49	44	2.5	62.83	125.66	8	15	18	26.0	17	34.8	935.7	15.7	16.3
28 65 100	6	1017.88	54	59	59	53	2.5	63.62	127.23	8	20	22	33.0	21	98.6	820.6	19.7	24.5

Total pitch error $GT_f/1000 \leq 0.026 \text{ mm}$

- Teeth case hardened and ground
- Case hardening steel according to ATLANTA-Standard
- Ground on all sides after hardening
- Signed with effective total pitch error (20°C)

Inspection measurement data available as an option.

Mounting racks, see page ZF-2.

To achieve precision rack joints, we recommend our patented rack assembly kit, see page ZF-4.

For lubrication of rack & pinions we recommend our automatic lubrication systems, see page ZE-1.

For the calculation and selection of the rack & pinion drive, see page ZD-1.

Screws for rack mounting, see page ZF-3.

