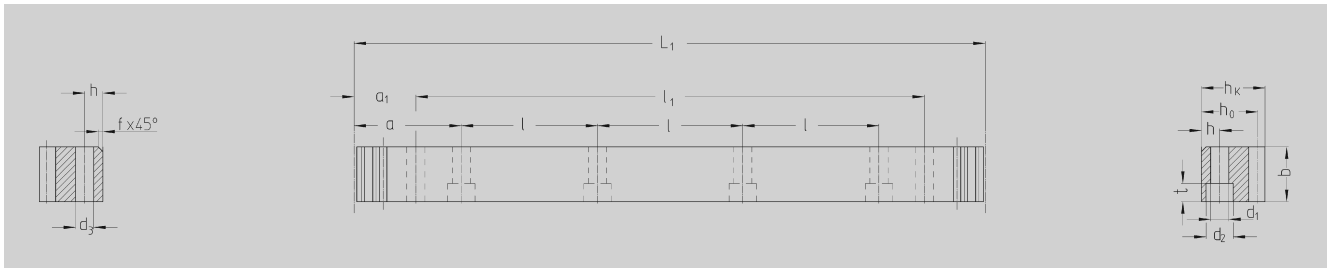




ATLANTA-Quality 7



Order Code	Module	L ₁	N° of Teeth	b	h _k	h ₀	f	a	l	N° of Holes	h	d ₁	d ₂	t	a ₁	l ₁	d ₃	kg
28 20 107	2	1005.3	160	24	24	22	2	62.8	125.66	8	8	7	11	7	31.3	942.7	5.7	4.2
28 30 107	3	1017.9	108	29	29	26	2	63.6	127.23	8	9	10	15	9	34.4	949.1	7.7	6.0
28 40 107	4	1005.3	80	39	39	35	2	62.8	125.66	8	12	14	20	13	37.5	930.3	7.7	10.5
28 50 107	5	1005.3	64	49	39	34	2.5	62.8	125.66	8	12	14	20	13	30.1	945.0	11.7	13.4
28 60 107	6	1017.88	54	59	49	43	2.5	63.6	127.23	8	16	18	26	17	31.4	955.00	15.7	20.20
28 80 107	8	1005.30	40	79	79	71	2.5	62.8	125.66	8	25	22	33	21	26.6	952.00	19.7	44.76

Total pitch error: $GT_f/1000 \leq 0.052$ mm

- Teeth induction-hardened and ground
- Material C45
- Ground on all sides after hardening

Mounting racks see page ZF-2.

To achieve precision rack joints, we recommend our patented rack assembly kit, see page ZF-4.

For lubrication of rack & pinions we recommend our automatic lubrication systems, see page ZE-1.



For the calculation and selection of the rack & pinion drive, see page ZD-1.

Screws for rack mounting, see page ZF-3.